

Designing Fairy

The Fairy Queen of Whimsical Wisdom. Uplifting and imaginative products and books that teach, comfort and inspire.

All original designs and writing by local Flagstaff artist.



COLOR PALETTE



Target Market

Women 30 – 65; Interested in Self Development, Healing & Spirituality, Whimsical Artwork and Uplifting Messages; Middle Class and Up, Educated, Creative.

Contacts:

Ronni Rose Swanson,
Creator/Art Director
cell Ronni 928-713-0408

Ben Swanson, Retail Development
cell Ben 928-221-8243

Tim Ellenberger, Sales Rep
horneduck@gmail.com
cell: 928-255-9779 (8am-4pm)

PRODUCT LINE – Wholesale & Retail Prices



Comfort Cards for Transitions

24 Card Box Set \$20-24 suggested retail
\$14.00 wholesale



HELP! I'M SENSITIVE
RONNI ANN HALL



YOUR TURTLE SHELL
RONNI ANN HALL



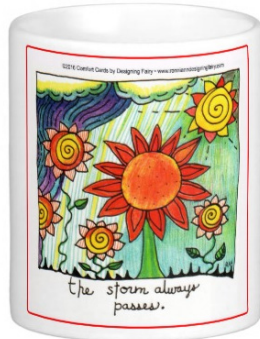
Comfort Card Mugs

\$20.00 suggested retail
3 Designs
\$14 wholesale



Comfort Card Framed Prints

\$27.00 suggested retail
\$12.00



Idea Emporium Story Postcards

Great for a counter
\$1.99 each suggested retail, \$1.00 wholesale



Healing Fairy Alphabet Deck

\$30-35.00 Suggested Retail
\$15.00

Help! I'm Sensitive book series

Book 1 and 2
\$11.99 suggested retail each
\$6.00 wholesale



Brand WORDS

Inspirational, Comforting, Wisdom, Magical, Imaginative, Humorous, Whimsical, Fun